

Power Relays

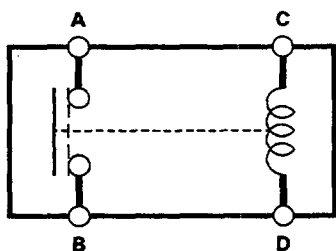
Relay Test

NOTE: See page 23-A173 for the turn signal/hazard relay input test.

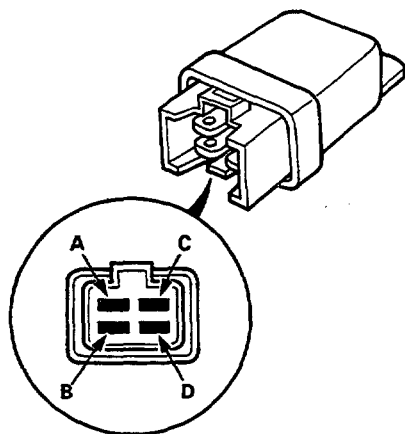
NORMALLY-OPEN Type:

1. Remove the power relay from its socket.
2. Check for continuity between the terminals.
 - There should be continuity between the A and B terminals when power and ground are connected to the C and D terminals.
 - There should be no continuity between the A and B terminals when power is disconnected.

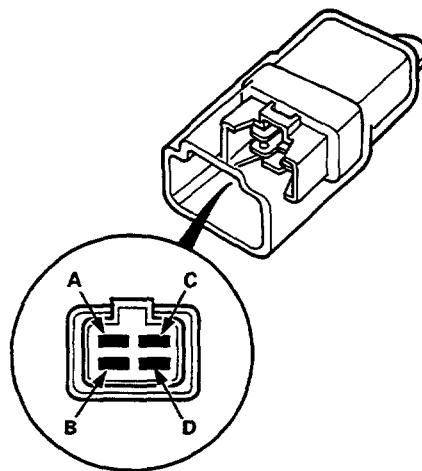
Terminal	A	B
Power (C-D)		
Disconnected		
Connected	○	○



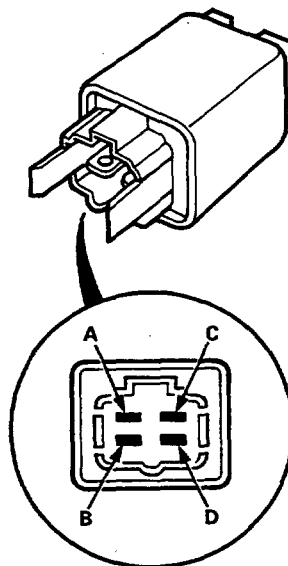
- Horn relay
- Security horn relay
- Front fog light relay
- Cigarette lighter relay



- Condenser fan relay
- A/C compressor clutch relay
- ABS front fail-safe relay
- ABS rear fail-safe relay

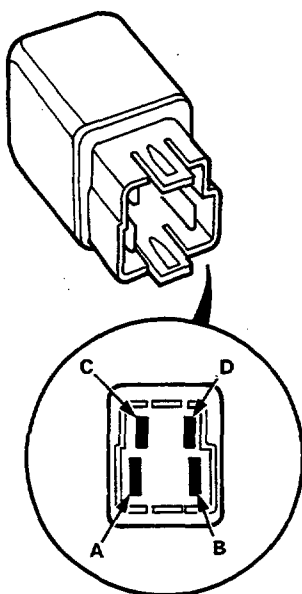


- Starter cut relay

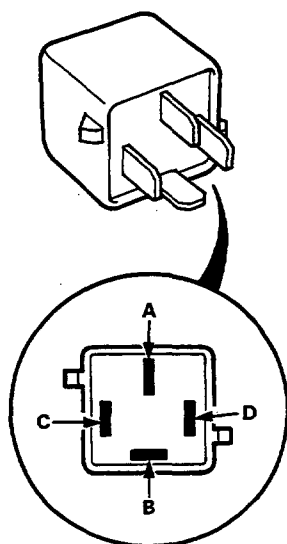




- ABS motor relay



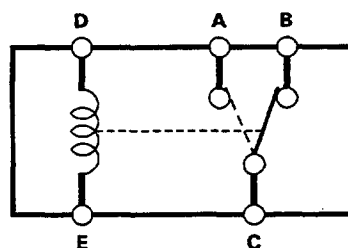
- Blower motor relay
- Power window relay
- Radiator fan relay
- Rear window defogger relay



FIVE-TERMINAL Type:

1. Remove the power relay from its socket.
2. Check for continuity between the terminals.
 - There should be continuity between the A and C terminals when power and ground are connected to the D and E terminals.
 - There should be continuity between the B and C terminals when power is disconnected.

Terminal	A	B	C
Power (D - E)			
Disconnected		○	○
Connected	○		○



- Sunroof open relay
- Sunroof close relay

